

LETTER • OPEN ACCESS

The sensitivity of US wildfire occurrence to pre-season soil moisture conditions across ecosystems

To cite this article: Daniel Jensen *et al* 2018 *Environ. Res. Lett.* **13** 014021

View the [article online](#) for updates and enhancements.

You may also like

- [An improved machine-learning model for lightning-ignited wildfire prediction in Texas](#)

Qi Zhang, Cong Gao and Chunming Shi

- [Circumpolar spatio-temporal patterns and contributing climatic factors of wildfire activity in the Arctic tundra from 2001–2015](#)

Arif Masrur, Andrey N Petrov and John DeGroot

- [Modelling the daily probability of wildfire occurrence in the contiguous United States](#)

Theodore Keeping, Sandy P Harrison and I Colin Prentice

UNITED THROUGH SCIENCE & TECHNOLOGY



**248th
ECS Meeting**
Chicago, IL
October 12-16, 2025
Hilton Chicago



**Science +
Technology +
YOU!**

**Register by
September 22
to save \$\$**

REGISTER NOW

Environmental Research Letters



LETTER

OPEN ACCESS

RECEIVED

3 January 2017

REVISED

15 September 2017

ACCEPTED FOR PUBLICATION

6 November 2017

PUBLISHED

17 January 2018

Original content from this work may be used under the terms of the [Creative Commons Attribution 3.0 licence](#).

Any further distribution of this work must maintain attribution to the author(s) and the title of the work, journal citation and DOI.



The sensitivity of US wildfire occurrence to pre-season soil moisture conditions across ecosystems

Daniel Jensen¹, John T Reager^{2,5}, Brittany Zajic¹, Nick Rousseau¹, Matthew Rodell³ and Everett Hinkley⁴¹ NASA DEVELOP National Program, Science Systems and Applications, Inc., Pasadena, CA, United States of America² NASA Jet Propulsion Laboratory, California Institute of Technology, Pasadena, CA, United States of America³ NASA Goddard Space Flight Center, Greenbelt, MD, United States of America⁴ National Remote Sensing Program Manager, USDA Forest Service, 1400 Independence Ave., SW, Washington, DC 20250, United States of America⁵ Author to whom any correspondence should be addressed.E-mail: john.reager@jpl.nasa.gov**Keywords:** wildfire, soil moisture, GRACE, remote sensing, hydrology, assimilation

Abstract

It is generally accepted that year-to-year variability in moisture conditions and drought are linked with increased wildfire occurrence. However, quantifying the sensitivity of wildfire to surface moisture state at seasonal lead-times has been challenging due to the absence of a long soil moisture record with the appropriate coverage and spatial resolution for continental-scale analysis. Here we apply model simulations of surface soil moisture that numerically assimilate observations from NASA's Gravity Recovery and Climate Experiment (GRACE) mission with the USDA Forest Service's historical Fire-Occurrence Database over the contiguous United States. We quantify the relationships between pre-fire-season soil moisture and subsequent-year wildfire occurrence by land-cover type and produce annual probable wildfire occurrence and burned area maps at 0.25 degree resolution. Cross-validated results generally indicate a higher occurrence of smaller fires when months preceding fire season are wet, while larger fires are more frequent when soils are dry. This is consistent with the concept of increased fuel accumulation under wet conditions in the pre-season. These results demonstrate the fundamental strength of the relationship between soil moisture and fire activity at long lead-times and are indicative of that relationship's utility for the future development of national-scale predictive capability.

1. Introduction

Wildfires in the United States have increasingly become larger and more frequent during the last several decades, contributing to greater environmental degradation, property damage, and economic losses (Dennison *et al* 2014, Morton *et al* 2003). By 2025, the cost of fire suppression in the United States is predicted to increase to nearly \$1.8 billion per year (United States Department of Agriculture (USDA) Forest Service 2015). As a result, there is a growing need for the capability to direct operational fire resources before the fire season begins. This points to the growing importance of seasonal to sub-seasonal forecasting capacity for wildfires, similar to those that are being developed for weather and natural resources management (National Academies of Sciences 2016).

Wildfires are typically defined as uncontrolled fires that occur in areas of combustible vegetation, and depend greatly on vegetation type, structure, arrangement, and moisture. In the contiguous United States, 90% of wildfire ignitions are associated with human activity, but several other environmental factors such as fuel availability, fuel moisture, wind, and lightning strikes can be of critical importance in ignition and growth. The largest contributing factors to general wildfire risk are the pre-fire-season accumulation of fuels and changing fuel moisture content (FMC), both of which can contribute to greater fire severity in a given region. Depending on the vegetation class, more fuels and lower FMC generally indicate higher fire risk and greater fire severity potential—the degree of environmental change caused by a fire (Verbesselt *et al* 2002, Van Der Werf *et al* 2008).

The spatial distribution and the moisture content of transient (i.e. fast-growing) fuels tend to be associated with precipitation and soil moisture conditions at the land surface over the months prior to fire season, when some regions experience an annual wet period or rainy season (Chuvieco *et al* 2004, Krueger *et al* 2015). These results suggest that soil moisture may be a good predictor of fire occurrence and fire severity, even at seasonal lead times.

However, in order to understand this relationship, the required local-scale data that are adequately discretized and have a spatially and temporally uniform structure are difficult to obtain over large domains (Famiglietti *et al* 2008). Therefore it is challenging to develop a quantitative description of the relationship between land surface wetness conditions in the period before fire-season and wildfire occurrence during the fire season, and the specific impacts of surface moisture conditions on wildfire occurrence across land cover types is largely unquantified.

The National Interagency Fire Center (2016) currently publishes seasonal fire potential outlook reports for the United States. These reports use the US Drought Monitor, past monthly temperature and precipitation deviations from average, and one and three-month weather outlooks to qualitatively assess regional fire potential. The fire potential maps produced offer a tercile assessment—normal, above normal, or below normal—of fire potential over broad geographic regions. This method does not currently apply a numerical relationship between seasonal fire occurrence and variability in contributing environmental factors such as soil moisture. It also does not yet produce a quantitative estimate of probable fire occurrence that could be used in a risk-assessment framework.

The Palmer Drought Severity Index (PDSI), additionally, has been shown to have utility in assessing drought impacts on wildfire activity (Xiao and Zhuang 2007). However, the PDSI, similar to the National Interagency Fire Center outlook reports, is based on temperature and precipitation sums and not actual soil moisture observations, and has been shown to be biased for assessment of drought conditions in some cases (Sheffield *et al* 2012). Burgan *et al* (1998) also developed a fire danger fuel model map across different ecoregions, largely based on satellite normalized difference vegetation index observations, but no soil moisture record was then available. These studies provide both a precedent and evidential basis for the use of large-scale climatological variables in wildfire assessment. The recent availability of large-coverage soil moisture products, specifically those produced with a combination of remote sensing and land-surface model simulations through numerical data assimilation, now offer the ability to quantify such relationships at finer scales and across large-domains. The development of these data sets should provide a unique opportunity for advancement in seasonal wildfire risk assessment.

This study thus seeks to integrate NASA earth observation data and the USDA Forest Service's historical fire record to quantify climatic relationships with fire activity. Model-assimilated hydrology observations are leveraged to examine finer spatial and longer temporal scales and to establish the quantitative basis for seasonal forecasting relationships. Since pre-season soil moisture can serve as a proxy for pre-season fuel accumulation and live fuel moisture conditions, a historical record of remotely sensed soil moisture data products was examined to disentangle the bearing pre-fire season soil moisture conditions have on a succeeding year's fire activity. With a proven statistical relationship, the methods developed herein can in turn be applied to improve fire prediction and risk assessment capabilities in the contiguous US. As more communities in the earth sciences work at achieving seasonal to sub-seasonal (S2S) predictive capabilities, the importance to society of knowing what might happen at several months lead-time is clear.

Launched in 2002, NASA's Gravity Recovery and Climate Experiment (GRACE) mission provides monthly observations of terrestrial water storage anomalies (TWSA) that describe spatial and temporal changes in the amount of water stored in soils, groundwater and above the land surface (Tapley *et al* 2004), which have proven useful in the monitoring of changing hydrologic conditions (e.g. Famiglietti *et al* 2011). However, GRACE observations have an intrinsically low spatial resolution ($\sim 150\,000\text{ km}^2$), due to the altitude of the satellites. This makes GRACE TWSA observations difficult to apply for natural resource management. One way to circumvent the resolution limitations of GRACE is to perform a physical downscaling of the GRACE observations through numerical data assimilation. This has been done with much success for drought and flood monitoring applications (Houborg *et al* 2012, Rodell 2013, Reager *et al* 2015), and is currently included as an input to the US Drought Monitor framework (Houborg *et al* 2012). The resulting surface soil moisture data, downscaled from raw GRACE data with the Catchment Land Surface Model (CLSM), form the base climatic independent variable in this study.

Building upon these successes, we investigate the relationship between GRACE-assimilated seasonal surface (i.e. top several centimeters) soil moisture (Zaitchik *et al* 2008) as a proxy for fuel moisture content and yearly wildfire occurrence and burn extent. We apply GRACE-assimilated soil moisture simulations downscaled with the CLSM and in-situ wildfire observations over the continental United States during the 2003–2012 period (Short 2015), at 0.25 degree spatial resolution, with the 2012–2013 data withheld for validation. Each grid cell represents approximately 785.18 km^2 , or 194 022.02 acres. While other remotely sensed soil moisture data products exist, such as those derived from Soil Moisture and Ocean Salinity (SMOS) and AMSR-E/Aqua, these GRACE-assimilated data

offer monthly datasets over a long temporal record and at a higher spatial resolution that are more ideal for calibrating a historical regression model over the contiguous United States. We disaggregate the study domain by land cover type (Homer *et al* 2015), under the hypothesis that wetness should modulate different land cover responses to wildfire ignition differently. Surface soil moisture alone, as opposed to root zone moisture content and total terrestrial water storage, was utilized in order to optimally capture seasonal variance in wetness that affects all dominant species across land cover types, including grasses with shallow roots (Famiglietti *et al* 1999). Additionally, utilizing surface soil moisture in this way provides a reference model that can then be applied with future Soil Moisture Active Passive (SMAP) data. We then determine the historic relationship between wildfire occurrence and CLSM-assimilated surface soil moisture across land cover types, and cross-validate a predicted response to show the strength of the relationship. In doing so, this study reveals complex nonlinearities in the influence of fuel moisture content on wildfire severity, and further establishes the need to incorporate accurate surface moisture information in the quantitative assessment of fire risk and potential in the United States. The aim of this study is to demonstrate a relationship between pre-season soil moisture and fire occurrence likelihood and to characterize large-scale fire sensitivity to seasonal moisture patterns.

2. Data

2.1. GRACE and CLSM-Data Assimilation

NASA's GRACE mission consists of two Earth-observing satellites orbiting in tandem and spaced about 220 kilometers apart at roughly 450 km altitude. A K-band ranging system provides precise measurements (within 10 μ m) of the distance between the satellites caused by spatial and temporal fluctuations in the Earth's gravity field (Tapley *et al* 2004). These measurements are used to determine variations in the Earth's mass distribution at a horizontal resolution of 150 000 km², with generally higher measurement accuracy across larger spatial scales (Wahr *et al* 2004). The monthly to decadal temporal changes in the gravity field are attributed primarily to mass redistribution in the atmosphere, ocean, continents and solid earth. After isolation and correction of 'unwanted' signals for hydrology applications (i.e. ocean, atmosphere, and postglacial rebound), these measurements, referred to as TWSA, are assumed to approximate the movement of water mass over time. Swenson and Wahr (2006) and Wahr *et al* (1998) offer general post-processing logistics and Landerer and Swenson (2012) offer specifics on scaling, signal restoration, and regional error calculation. The GRACE dataset utilized for this project is processed by the Texas Center for Space Research (CSR; version

CSR-RL05) and NASA's Jet Propulsion Laboratory. It is a global, monthly, one degree gridded, scaled GRACE land data product available for download at grace.jpl.nasa.gov. The data for this project is from the time period April 2002–December 2013.

Developed at the NASA Goddard Space Flight Center, the Catchment Land Surface Model (CLSM) is a physically based land surface model (Koster *et al* 2000). For the model forcing, the horizontal structure of a rectangular atmospheric grid is separated into topographically-defined catchments with an estimated average area of 4000 km². Water is spatially and vertically distributed in the model determined by topography and the model's hydrologic processes are generally determined by the catchment's topographical statistics. In the assimilation algorithm, the model-generated terrestrial water storage moisture elements are corrected with the GRACE observational estimate using an ensemble Kalman smoothing filter method as described in Zaitchik *et al* (2008). Assimilation incorporates the relative uncertainty in the model and the observations. In this process, a two-step smoother is applied to manage GRACE's monthly temporal resolution both forward and backwards in time. In order to create consistency among observed and modeled variables, the GRACE water storage anomalies are changed to absolute values by adding the simulated time mean water storage variable from the CLSM output to the observations. The observations are directly applied to the column-integrated forecasted variable (the catchment deficit) and the primary non-equilibrium prognostic (the root zone excess moisture), and the vertical disaggregation occurs based on covariance. The CLSM-Data Assimilation (CLSM-DA) data used in this study extend from January 2003–December 2014, and the outputs are reported on 0.25 degree grid cells for the contiguous United States. The gridded analysis used in this paper is an interpolation of catchment tiles to an equally spaced model grid for consistency with the other data sets used. Resampling these other datasets to the coarser resolution always introduces uncertainty but captures more first order climatic characteristics.

2.2. Fire Program Analysis fire-occurrence database

The USDA Forest Service's Fire Program Analysis fire-occurrence database (FPA FOD) is a comprehensive geospatial database of wildfires in the United States from 1992–2013. It includes 1.73 million georeferenced wildfire records, representing a total of 126 million acres burned during the 22 year period (Short 2015). It also contains vital information for each of these fires, including date, cause, fire size, fire size class, burned area, and coordinates. These data were imported as points into a geographic information system and processed into two separate raster datasets that matched the spatial and temporal resolution of the GRACE derived soil moisture data. The first dataset aggregated the annual number of fires in

each 0.25×0.25 degree cell for May through April of the following year, while the second summed the total burned area (in acres) for each cell in that timeframe.

2.3. National Land Cover Database

The land cover type dataset used in this study was the USGS' National Land Cover Database 2011 (NLCD 2011) (Homer *et al* 2015). This dataset maps land cover and land use across the United States at a 30 meter resolution. The NLCD data were first reclassified for generalization and resampled to the same spatial extent and resolution as the previous two datasets using a majority resampling technique that allocates each pixel's class based on the most popular value within a 3 by 3 window. This allowed each grid cell to have a unique land cover classifier, which could then be programmatically used to extract values and characterize each relevant vegetation type's relationship between soil moisture and wildfire. For the purposes of this study, only vegetated land cover types are of importance to wildfires. Accordingly, the developed/urban, barren land, and planted/cultivated classes were not considered in the analysis. The mixed forest class was not considered due to its unsuitably small number of pixels. Additionally, even though model simulations of wetland soil moisture may not be accurate due to missing physical processes, we include this class to represent general wet/dry responses in wetland environments. Figure 1 shows a visualization of this processed land cover data along with the other two datasets mentioned above.

3. Methods

3.1. Data processing

The first step in algorithm development was to disaggregate the fire data by wildfire size class (table 1). Annual January through April (2003–2014) soil moisture from the GRACE-derived CLSM-DA data were averaged into single two-dimensional maps (latitude \times longitude) for each year that depict a fire season's antecedent moisture conditions (Xystrakis *et al* 2014). Annual total fire occurrence and cumulative burned area maps, aggregated from the rasterized FPA FOD data, were produced for each wildfire class, covering the period ranging May through April of the following year. This time period was selected in order to delineate a nominal fire season in line with the beginning of the western US fire season, although true fire season tends to vary in time and by location (Westerling *et al* 2003). Within each land cover type, all burned area and fire occurrence values—which here refers to the total number of fires occurring in a given grid cell—were plotted against corresponding CLSM-DA soil moisture values for the entire population of 0.25 degree grid cells. While wildfires belonging to a smaller size class constitute only a fraction of a percent of their parent grid cell, the frequency of their occurrence within each

Table 1. Fire size class definitions^a.

Class	Burned acres
A	0–0.25
B	0.26–9.9
C	10–99.9
D	100–299
E	300–999
F	1000–4999
G	5000 +

^a Class size ranges are defined by (Short 2015).

discretized area is an important climatological figure linking soil moisture to fire activity.

This produced a distribution of fire occurrence, visible in figure 1, and burned area as a function of soil moisture for each land cover class. These data were then binned by soil moisture ranges to calculate average fire occurrence and burned area values over each range. These distributions reveal the unique relationship in each land cover class between occurrence of wildfires of increasing size classification as a function of soil moisture state. These relationships were then individually modeled by fitting an exponential or linear function depending on which resulted in a higher R^2 value. If neither function's R^2 surpassed 0.5, meaning pre-season soil moisture explains less than 50% of the variance in fire activity, mean number of fires and mean burned area were plotted instead. This methodology is displayed for fire occurrence in figure 2 for each land cover type and fire size class, and the same method was followed for burned area.

We also investigated whether the information contained in these relationships with soil moisture demonstrated predictive utility. Comprehensive deterministic prediction is challenging, because we don't include all of the information required to determine the comprehensive source and forcing for all fire occurrence and severity; variables such as lightning strikes, human activity, wind gusts, and fuel loading all contribute substantially to actual wildfire predictability. Instead, we investigate a statistical tendency of soil moisture to affect wildfire occurrence by lumping a large population of observations into a single model and evaluating how the population responds as whole to this single factor. We assume that the population captures the probable best estimate of the relationship that would occur at a single location under different conditions and across time. A comprehensive fire prediction model could likely include other forcing variables.

3.2. Predictive model

Each modeled distribution's fitted function or mean was referenced for mapping fire probability and predicted burned area. Fire probability and average burned area were calculated by applying each individual pre-season soil moisture value to the function corresponding to its land cover type for the relevant fire size class. Probable total burned area (equation (1)) is then estimated by multiplying the modeled fire occurrence by the modeled average burned area value for each cell's

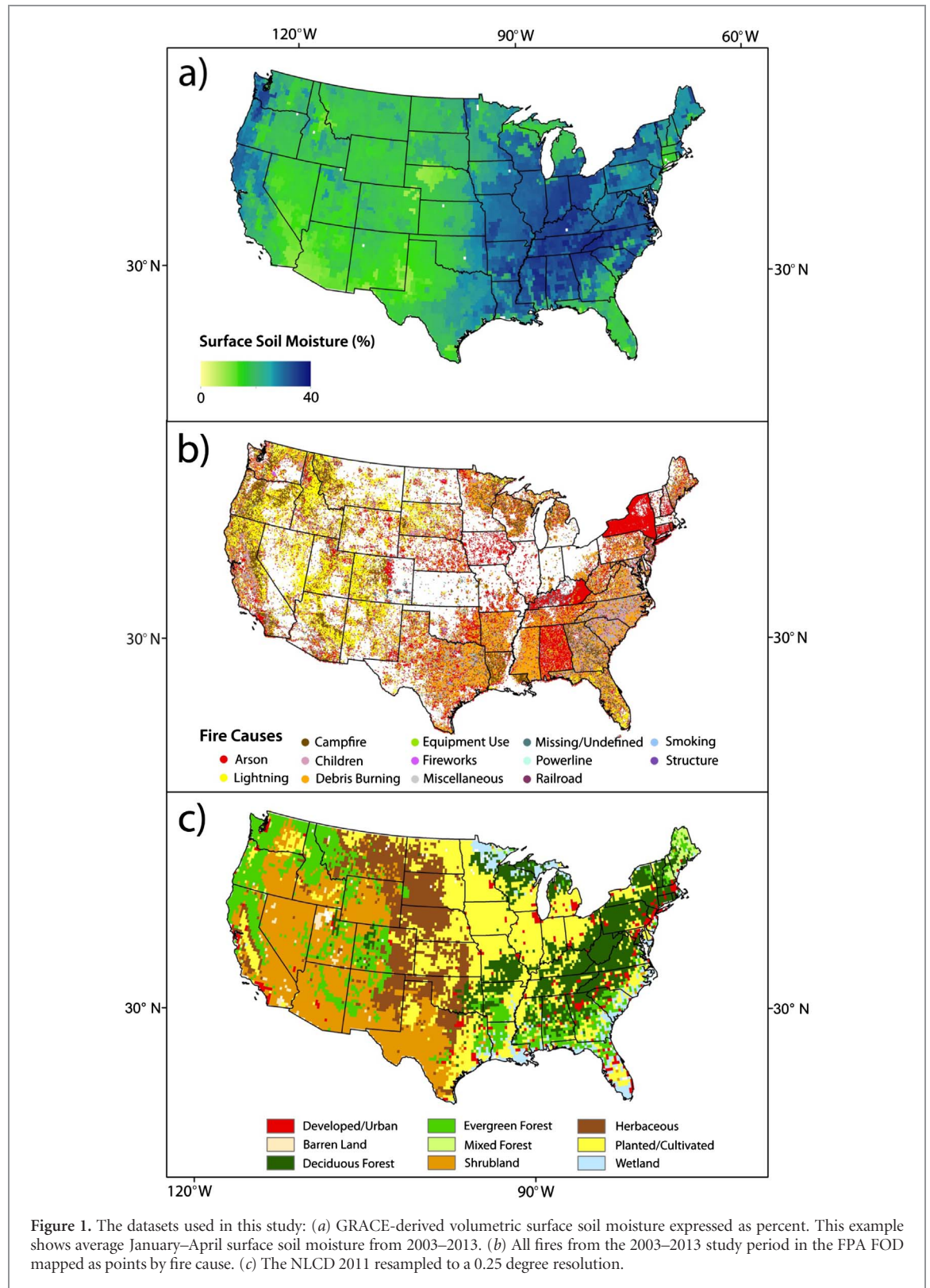


Figure 1. The datasets used in this study: (a) GRACE-derived volumetric surface soil moisture expressed as percent. This example shows average January–April surface soil moisture from 2003–2013. (b) All fires from the 2003–2013 study period in the FPA FOD mapped as points by fire cause. (c) The NLCD 2011 resampled to a 0.25 degree resolution.

soil moisture value as broken down by land cover type and fire size class

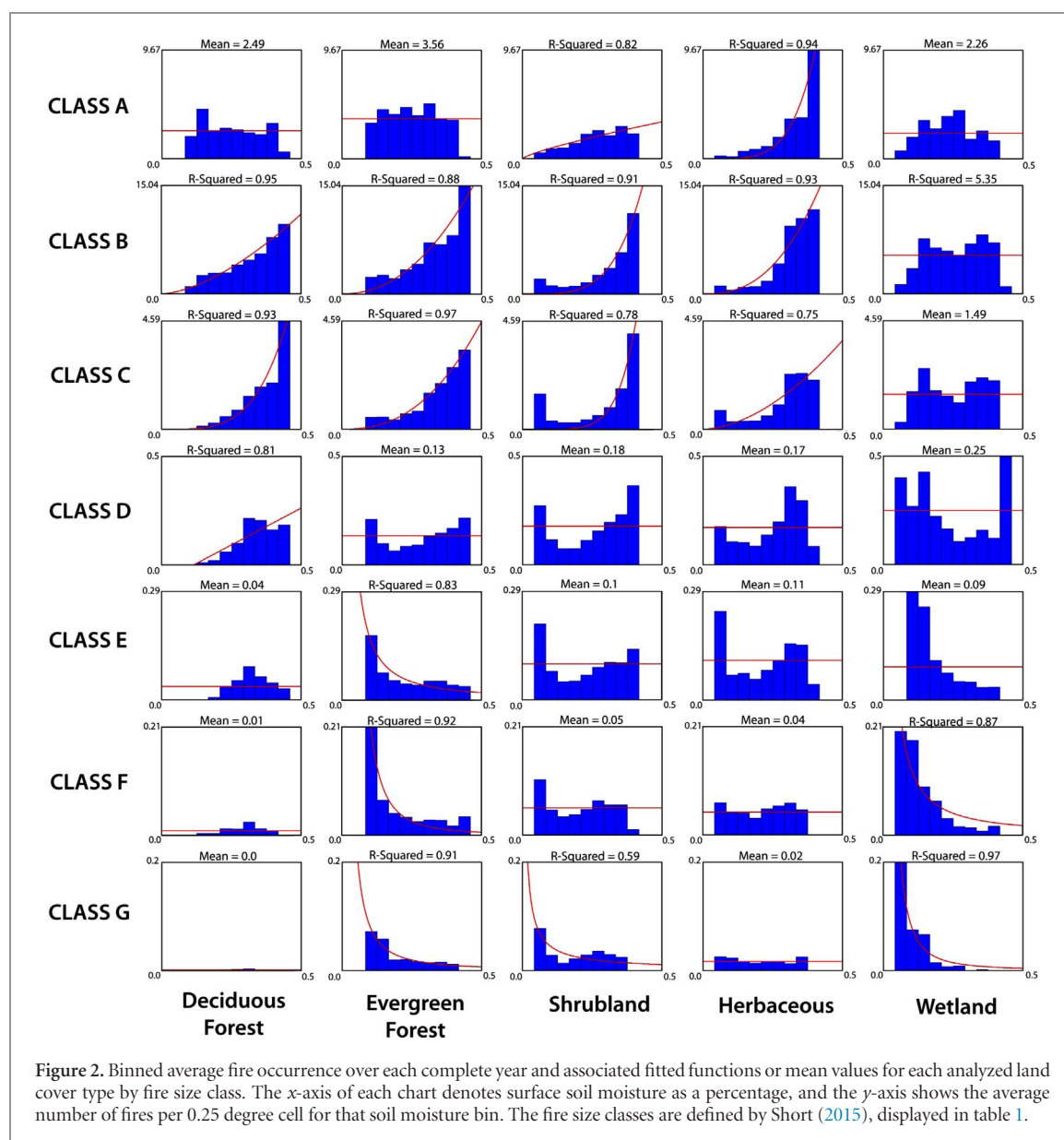
$$\begin{aligned} &\text{Probable Burned Area}(i) \\ &= \text{Fire Occurrence}(\text{SM}_i, \text{LC}_i) \\ &\quad \times \text{Average Burned Area}(\text{SM}_i, \text{LC}_i). \end{aligned} \quad (1)$$

In equation (1), i is a given 0.25 degree grid cell, and SM_i and LC_i are the corresponding values of soil moisture and land cover classification. Maps for both predicted number of fires and predicted burned area

were thus created for each fire size class. These maps, binned by fire size for each parameter, can be added together to create maps for a year's total predicted number of fires and total burned acreage.

4. Results

Figure 2 shows that within each land cover type, there are different distributions of fire occurrence as a



function of soil moisture for each fire class. For example, within the evergreen forest type, the smaller fire classes B, C, and D tend to be more frequently associated with a higher average number of fires following high pre-fire season soil moisture. Meanwhile, the larger fire classes E, F, and G, show the opposite trend whereby dryer soil moisture conditions in January–April are associated with more fires throughout the following year. Some distributions are relatively uniform and show little variability. This indicates the absence of a clear relationship between soil moisture and fire occurrence, or that other factors tend to mask that relationship. Each vegetation type differs from the other in its surface soil moisture and fire occurrence and size patterns. Deciduous forest tends to be the wettest modeled ecosystem (mean volumetric water content fraction = 0.31, standard deviation = 0.06) and shrubland tends to be the driest (mean volumetric water content fraction = 0.19, standard deviation = 0.05). Wetland ecosystems have the most fires per

cell on average (11.46 fires per year, standard deviation = 16.79), while shrublands have the fewest (3.48 fires per year, standard deviation = 9.16). These values were calculated by compiling the preseason surface soil moisture and fire occurrence values across all cells within each land cover type for each year in the study period. These values indicate the need to disaggregate the relationship between fire occurrence and soil moisture by land cover type, as each type shows a significantly different fire response to soil moisture levels.

Figure 3 provides an example of results by hind-casting the May 2012–April 2013 fire year. The top map shows the total number of fires expected to occur in each cell that year based on the preceding January–April average soil moisture. Figure 3 (bottom) shows total predicted burned acreage. The spatial gaps in the predictive maps represent the withheld land cover classes. These maps were created for each year in the study period, and their summary statistics for

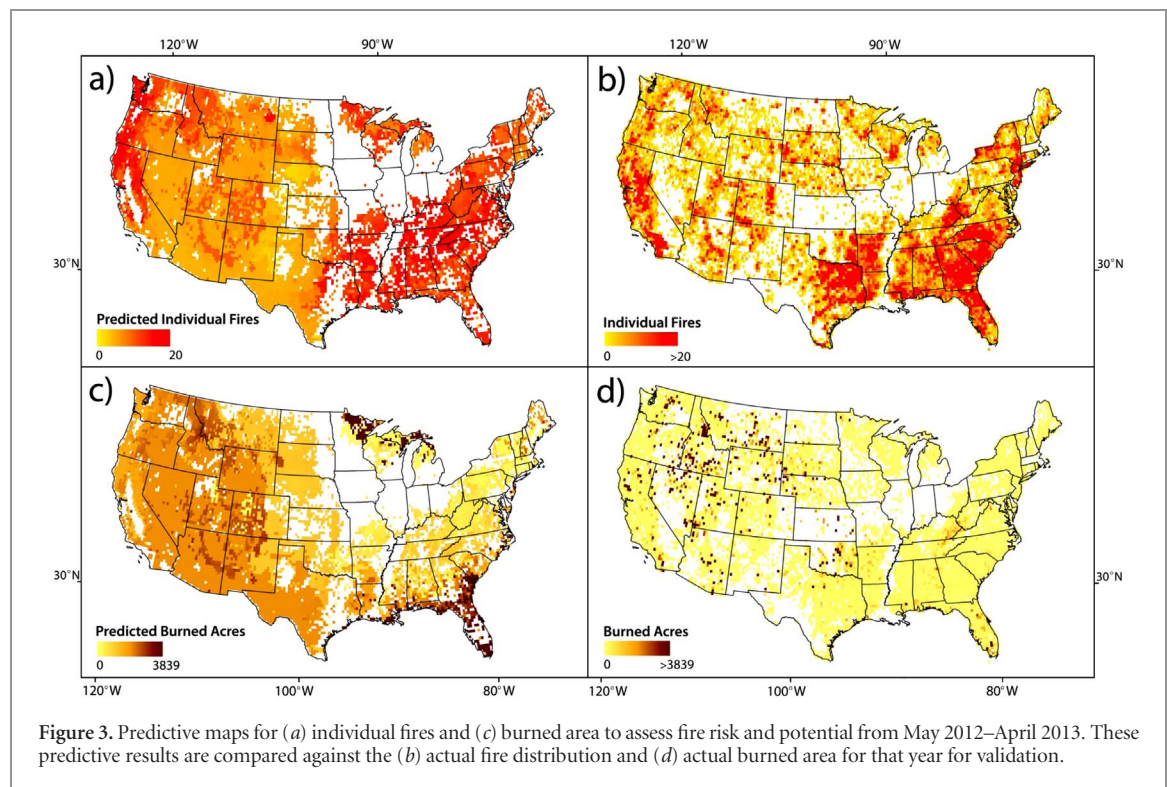


Figure 3. Predictive maps for (a) individual fires and (c) burned area to assess fire risk and potential from May 2012–April 2013. These predictive results are compared against the (b) actual fire distribution and (d) actual burned area for that year for validation.

predicted number of fires and total burned acres were compiled and charted in table 2 and figure 4.

To validate these results, predicted fire occurrence and burned area maps that were generated for the 2012–2013 fire year (i.e. the most recent year in the FPA FOD dataset), and compared against the observations. For proper cross-validation, this fire year was held out of the algorithmic step. Results are compiled in table 2. Additionally, the processed FPA FOD data were disaggregated by land cover type and charted next to the predicted fire data, as shown for May 2012–April 2013 in figure 4, showing the relative accuracy of the algorithm's prediction for each vegetation type in addition to standard percent error calculations (equation (2))

$$\%_{\text{error}} = \left| \frac{\#_{\text{experimental}} - \#_{\text{theoretical}}}{\#_{\text{theoretical}}} \right| \times 100. \quad (2)$$

Land cover types that were deemed unsuitable for the analysis (i.e. mixed forest, agricultural, barren, and urban) were removed from the data sets. Figure 4 shows that in the 2012–2013 case study, the values for predicted fire occurrence and burned area match the actual data within an error of 13.89% and 9.52% respectively, compared to an average error 13.10% for predicted fires and 119.40% for predicted burned area for the entire study period.

5. Discussion and conclusions

It should be noted that the predictive maps presented are not intended to offer an accurate hindcast of actual fire occurrence and severity in individual 0.25 degree

grid cells. Rather, they offer an assessment of the relationship between seasonal soil moisture and wildfire potential, specifically the sensitivity of fires in the fire season to pre-season surface moisture conditions. The modeled functions and validation results show that the total number of fires and burned area predicted is in fact correlated with the pre-season soil moisture data for the corresponding year, across the land cover grouping. A positive correlation would indicate that high pre-season soil moisture is followed by high fire activity, while a negative correlation would see low fire activity. Regional hindcasting of fire occurrence was performed by aggregating the land-cover consistent regions in their entirety over the contiguous US, and optimizing the fire response model for each land cover type. This improves upon an ecoregion approach for which a number of included land cover types may exist, and a corresponding number of fire responses to moisture may occur (e.g. Parks *et al* 2014). The strong correlation achieved in our results highlights the principal importance of preseason soil moisture in governing fire risk and potential, likely as a proxy for preseason fuel accumulation.

These results provide the first evidence that pre-season soil moisture and wildfire occurrence can be strongly negatively correlated across land cover types. In all land covers, the smaller fire classes (i.e. class 'D' or smaller, <300 acres) are generally (11 out of 20 scenarios) associated with higher pre-season soil moisture, not lower soil moisture as hypothesized. This likely describes a situation in which smaller and quick-growing vegetation (e.g. grasses and understory) are more prolific in wet years, and tend to contribute to wildfire persistence and propagation after ignition. As

Table 2. Predicted and actual fire data with associated prediction errors.

	Predicted fires	Actual fires	Predicted burned acres	Actual burned acres	Predicted fires percent error	Predicted burned area percent error
5/2003–4/2004	59410	53542	7356289.94	3333260.32	10.96	120.69
5/2004–4/2005	58131	44304	7429770.21	1288883.79	31.21	476.45
5/2005–4/2006	61526	72461	7472239.08	6710199.52	11.36	15.09
5/2006–4/2007	56998	66903	7343697.15	7181219.66	2.26	14.81
5/2007–4/2008	57954	62238	7427601.87	8680825.32	6.88	14.44
5/2008–4/2009	56177	59937	7357446.45	3887901.30	6.27	89.24
5/2009–4/2010	56337	43507	7407664.38	1603893.48	29.49	361.86
5/2010–4/2011	61071	55468	7510430.96	4935915.82	10.10	52.16
5/2011–4/2012	57448	52897	7423439.20	5312742.66	8.60	39.73
5/2012–4/2013	55442	48679	7559133.21	8354888.73	13.89	9.52

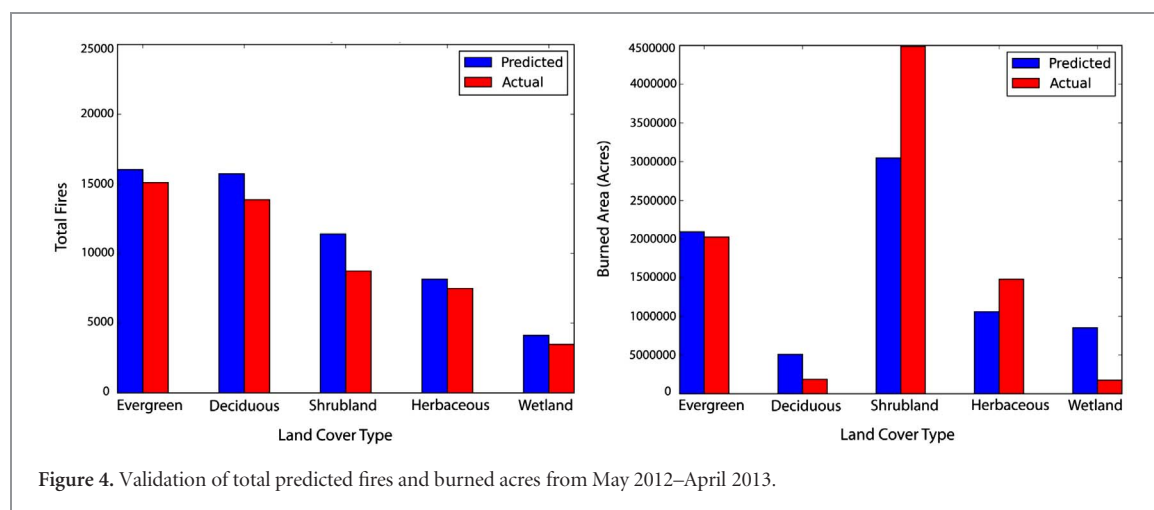


Figure 4. Validation of total predicted fires and burned acres from May 2012–April 2013.

the resampled NLCD 2011 data was implemented in our algorithm, land cover is assumed to be static over the study period. It is possible that this represents an additional error source in our regression, though there is no clear pattern in the percent error figures (table 2) and land cover changes likely represent a small fraction of the regressed relationships across the entire aggregated domain. The random error structure suggests that the model error is more associated with year-to-year weather and soil moisture patterns rather than land cover change. As soil moisture in this study is used as a proxy for vegetation moisture and general climate conditions, a wet pre-season in certain vegetation types is correlated with more primary production creating increased fuel availability when fire season arrives. This is further corroborated by observations made by Xystrakis *et al* (2014), which saw high spring precipitation succeeded by high burned area values. The case that would lead to the most fires in these land cover types is likely that of a very wet pre-season, followed by a very dry fire season. This relationship has been studied before using precipitation observations (e.g. Holden *et al* 2007).

While the necessity is clear, the feasibility of wild-fire predictive capabilities is increasing with the advent of innovative applications of new remote sensing data. As our analysis focused on quantifying and validating the overall relationship between pre-season soil moisture and succeeding fire activity rather than

providing accurate annual fire activity predictions, model outputs are not intended to be applied as accurate annual fire activity predictions. While the model illuminates this relationship, its performance may be negatively affected by limitations in the datasets and omitted environmental factors. For one, resampling the NLCD land cover to the coarser GRACE-DA resolution inevitably decreased the purity of each pixel's designated land cover type. Using finer-scale SMAP data to expand this analysis may mitigate these effects, and additionally improve the retrieval of burned area. Since accurate, observation-based surface soil moisture information has been difficult to obtain over large domains, GRACE-assimilated model outputs may offer a unique contribution to fire severity prediction methods. This builds upon successes in using GRACE-assimilated model outputs for hydrologic drought monitoring (Houborg *et al* 2012), and reinforces the importance of the relationship between large-scale hydrologic forcing and fire response. The current NASA SMAP mission (Entekhabi *et al* 2010), launched January 2015, offers global observations of radiometer-based surface soil moisture at a base 36 km spatial resolution that can be used in conjunction with GRACE-assimilation efforts and should generally improve this methodology. The expanding temporal and spatial coverage of soil moisture brought about by SMAP will additionally allow this methodology to be applied in regions with more heterogeneous land

cover conditions due to higher resolutions. These more complex regions may also be approached with regionally sensitive environmental parameters to generate more accurate regional predictive fire maps. For example, the classification of large swaths of Minnesota and Michigan as wetland in the NLCD (figure 1) caused those areas' fire frequency to be greatly overestimated as a result of the high fire activity in Florida's Everglades and other wetland regions (figure 3). Indeed, the wetland regression models (figure 2) do not show high correlation coefficients except in the case of large fires, indicating regional processes controlling the majority of the variance. Other regional drivers of fire activity that see great spatial and temporal variability, such as fuel moisture, wind, and lightning patterns (Veraverbeke *et al* 2017) may further reduce the modeled discrepancies in fire occurrence and intensity. Along with the finer-scale SMAP data, the fundamental relationship between soil-moisture and fire activity observed in this study could be built upon using other environmental variables to generate monthly regional predictive fire maps.

Acknowledgments

This research was conducted at the Jet Propulsion Laboratory, California Institute of Technology, under contract with NASA. We would like to thank Mark Finney and Chuck McHugh, from the USDA Forest Service Predictive Services Program for their involvement in providing direction and information pertaining to wildfires in the United States. This work was supported by the NASA DEVELOP program, through contract NNL11AA00B and cooperative agreement NNX14AB60A. Funding sources include the NASA Applied Sciences Program and the NASA GRACE Science Team. The data supporting this study's conclusions consist of the included tables and figures. The FPA FOD data (Short 2015) can be accessed at <https://doi.org/10.2737/RDS-2013-0009.3>. The assimilated GRACE data is available at <http://grace.jpl.nasa.gov>. The NLCD 2011 is available at www.mrlc.gov/nlcd2011.php.

ORCID iDs

Daniel Jensen  <https://orcid.org/0000-0003-3331-2847>

References

- Burgan R, Klaver R and Klaver J 1998 Fuel models and fire potential from satellite and surface observations *Int. J. Wildland Fire* **8** 159
- Chuvieco E, Aguado I and Dimitrakopoulos A P 2004 Conversion of fuel moisture content values to ignition potential for integrated fire danger assessment *Can. J. Forest Res.* **34** 2284–93
- Dennison P E, Brewer S C, Arnold J D and Moritz M A 2014 Large wildfire trends in the western United States, 1984–2011 *Geophys. Res. Lett.* **41** 2928–33
- Entekhabi D *et al* 2010 The soil moisture active passive (SMAP) mission *Proc. IEEE* **98** 704–16
- Famiglietti J, Devereaux J, Laymon C, Tsegaye T, Houser P, Jackson T, Graham S, Rodell M and van Oevelen P 1999 Ground-based investigation of soil moisture variability within remote sensing footprints during the southern Great Plains 1997 (SGP97) hydrology experiment *Water Resour. Res.* **35** 1839–51
- Famiglietti J S, Ryu D, Berg A A, Rodell M and Jackson T J 2008 Field observations of soil moisture variability across scales *Water Resour. Res.* **44** W01423
- Famiglietti J S, Lo M, Ho S L, Bethune J, Anderson K J, Syed T H, Swenson S C, De Linage C R and Rodell M 2011 Satellites measure recent rates of groundwater depletion in California's Central Valley *Geophys. Res. Lett.* **38** L03403
- Holden Z A, Morgan P, Crimmins M A, Steinhilber R K and Smith A M S 2007 Fire season precipitation variability influences fire extent and severity in a large southwestern wilderness area, United States *Geophys. Res. Lett.* **34** L16708
- Homer C G, Dewitz J A, Yang L, Jin S, Danielson P, Xian G, Coulston J, Herold N D, Wickham J D and Megown K 2015 Completion of the 2011 National Land Cover Database for the conterminous United States-representing a decade of land cover change information *Photogramm. Eng. Remote Sens.* **81** 345–54
- Houborg R, Rodell M, Li B, Reichle R and Zaitchik B F 2012 Drought indicators based on model-assimilated Gravity Recovery and Climate Experiment (GRACE) terrestrial water storage observations *Water Resour. Res.* **48** W07525
- Koster R D, Suarez M J, Ducharme A, Stieglitz M and Kumar P 2000 A catchment-based approach to modeling land surface processes in a general circulation model: 1. Model structure *J. Geophys. Res.* **105** 24809–22
- Krueger E S, Ochsner T E, Engle D M, Carlson J D, Twidwell D and Fuhlendorf S D 2015 Soil moisture affects growing-season wildfire size in the southern Great Plains *Soil Sci. Soc. Am. J.* **79** 1567–76
- Landerer F W and Swenson S C 2012 Accuracy of scaled GRACE terrestrial water storage estimates *Water Resour. Res.* **48** 1–11
- Morton D C, Roessing M E, Camp A E and Tyrrell M L 2003 Assessing the environmental, social, and economic impacts of wildfire *GISF Research Paper 0001* (New Haven, CT: Yale University)
- National Academies of Sciences, Engineering, and Medicine 2016 *Next Generation Earth System Prediction: Strategies for Subseasonal to Seasonal Forecasts* (Washington, DC: The National Academies Press)
- National Interagency Fire Center 2016 *Predictive Services: Nationally Significant Wildland Fire Potential Outlook* (Boise, ID)
- Parks S A, Parisien M-A, Miller C and Dobrowski S Z 2014 Fire activity and severity in the western US vary along proxy gradients representing fuel amount and fuel moisture *PLoS ONE* **9** 0099699
- Reager J, Thomas A, Sproles E, Rodell M, Beaudoin H, Li B and Famiglietti J 2015 Assimilation of GRACE terrestrial water storage observations into a land surface model for the assessment of regional flood potential *Remote Sens.* **7** 14663–79
- Rodell M 2013 Application of satellite gravimetry for water resource vulnerability assessment *Climate Vulnerability: Understanding and Addressing Threats to Essential Resources* (Boulder, CO: Academic) pp 151–9
- Sheffield J, Wood E F and Roderick M L 2012 Little change in global drought over the past 60 years *Nature* **491** 435–8
- Short K C 2015 *Spatial Wildfire Occurrence Data for the United States, 1992–2013 (FPA_FOD_20150323)* 3rd edn (Fort Collins, CO: Forest Service Research Data Archive)

- Swenson S and Wahr J 2006 Post-processing removal of correlated errors in GRACE data *Geophys. Res. Lett.* **33** L08402
- Tapley B D, Bettadpur S, Ries J C, Thompson P F and Watkins M M 2004 GRACE measurements of mass variability in the Earth system *Science* **305** 503–5
- US Forest Service 2015 The rising cost of fire operations: effects on the Forest Service's non-fire work *US Forest Service Report*
- Van Der Werf G R, Randerson J T, Giglio L, Gobron N and Dolman A J 2008 Climate controls on the variability of fires in the tropics and subtropics *Glob. Biogeochem. Cycles* **22** GB3028
- Veraverbeke S, Rogers B M, Goulden M L, Jandt R R, Miller C E, Wiggins E B and Randerson J T 2017 Lightning as a major driver of recent large fire years in North American boreal forests *Nat. Clim. Change* **7** 529–34
- Verbesselt J, Fleck S and Coppin P 2002 Estimation of fuel moisture content towards fire risk assessment: a review *Proc. 6th Int. Conf. on Forest Fire Research* pp 55–67
- Wahr J, Molenaar M and Bryan F 1998 Time variability of the Earth's gravity field: hydrological and oceanic effects and their possible detection using GRACE *J. Geophys. Res.* **103** 205–29
- Wahr J, Swenson S, Zlotnicki V and Velicogna I 2004 Time-variable gravity from GRACE: first results *Geophys. Res. Lett.* **31** L11501
- Westerling A L, Gershunov A, Brown T J, Cayan D R and Dettinger M D 2003 Climate and wildfire in the Western United States *Bull. Am. Meteorol. Soc.* **84** 595–604
- Xiao J F and Zhuang Q L 2007 Drought effects on large fire activity in Canadian and Alaskan forests *Environ. Res. Lett.* **2** 044003
- Xystrakis F, Kallimanis A S, Dimopoulos P, Halley J M and Koutsias N 2014 Precipitation dominates fire occurrence in Greece 1900–2010: its dual role in fuel build-up and dryness *Nat. Hazards Earth Syst. Sci.* **14** 21–32
- Zaitchik B F, Rodell M and Reichle R H 2008 Assimilation of GRACE terrestrial water storage data into a land surface model: results for the Mississippi River basin *J. Hydrometeorol.* **9** 535–48